



Add-on Module to the DC-1000 enabling monitoring of AC parameters including

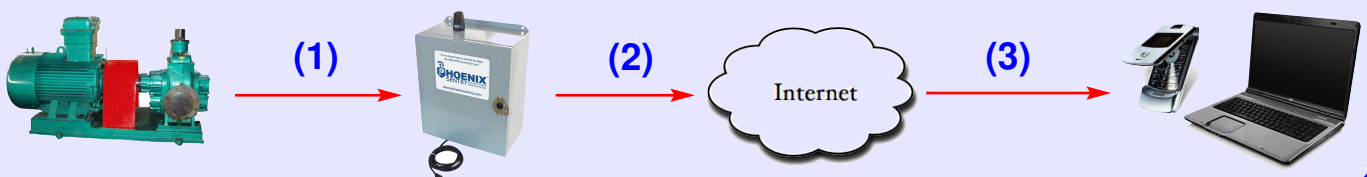
- Phase voltage, current, frequency
- Power Factor
- Excessive usage caused by inductive loads, such as motors
- Peak demand usage causing increased utility bills

Product Description

- Interfaces to standard DC-1000 through RS-485 port connection
- Isolates all high voltage and currents to a separate enclosure, simple low-voltage connection to the DC-1000
- Selectable snap-on toroid transformers on each phase eliminate rewiring
 - selectable load ratings from 10-10,000 amps per phase
- Designed to mount near load center
- Designed to perform in hostile environments
- Protected by a full one year warranty (extended warranty available)
- Requires only AC power
- All required 'virtual' AC meters and gauges supported on the PhoenixSentry website portal and included with product support

How it works, simply as easy as 1 • 2 • 3!

- (1) Your equipment's sensors connected to the DC-1000 + Falcon
- (2) The DC-1000 packetizes and encrypts the data and sends it over the internet to...
- (3) Your selected viewing devices - Laptop, desktop, cellular phone or tablet



Falcon Specifications

DC-1000 interface: RS-485

Input Power requirements

88-264 VAC , 47-63 Hz, 1.6 amps maximum.

Mechanical:

Operating temperature: -25 to +70 C

Size: 14 h x 12 w x 6 d inches

Standard rating: NEMA 4X IP66

Warranty: Standard one (1) year

Optional 3 year full warranty available

Monitored parameter list

Energy - real, lead/lag, regenerative

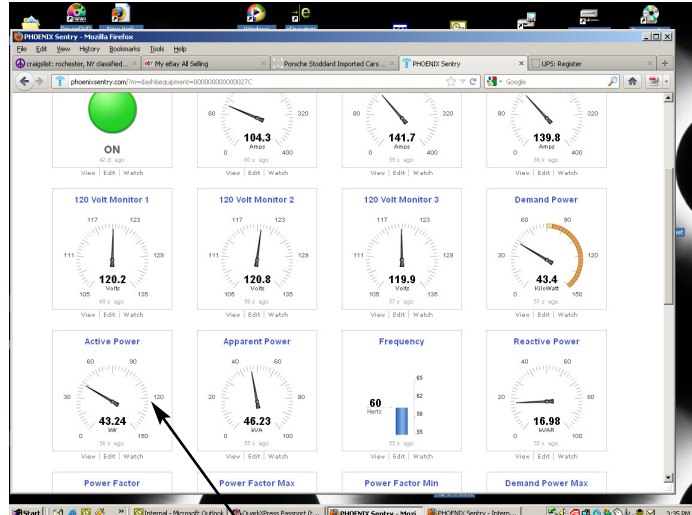
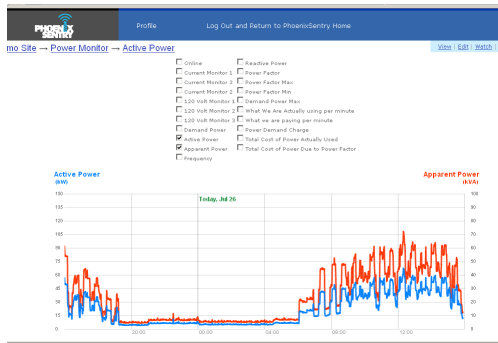
Power - Active, reactive, apparent

Phases - Voltage, current

Power factor

Frequency

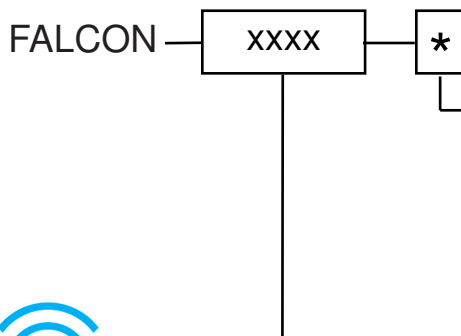
Demand - power and current



A simple click on the gauge panel opens the event history - combine multiple gauges to view correlated data

Part Number

•Ordering Information•



Enclosure Option

- 0 - (Standard) Polycarbonate Nema 4 enclosure
- 1 - NEMA 4X Stainless
- 2 - Other (Specify)

Current range (CT)

- 0200 - 40:1 (0-200 A)
- 0300 - 60:1 (0-300 A)
- 0400 - 80:1 (0-400 A)
- 0500 - 100:1 (0-500 A)
- 0600 - 120:1 (0-600 A)
- 1000 - 200:1 (0- 1kA)
- 1200 - 240:1 (0- 1.2 kA)

